

THIS MAP IS NOT COMPLETE WITHOUT SHEETS 1 THROUGH 4

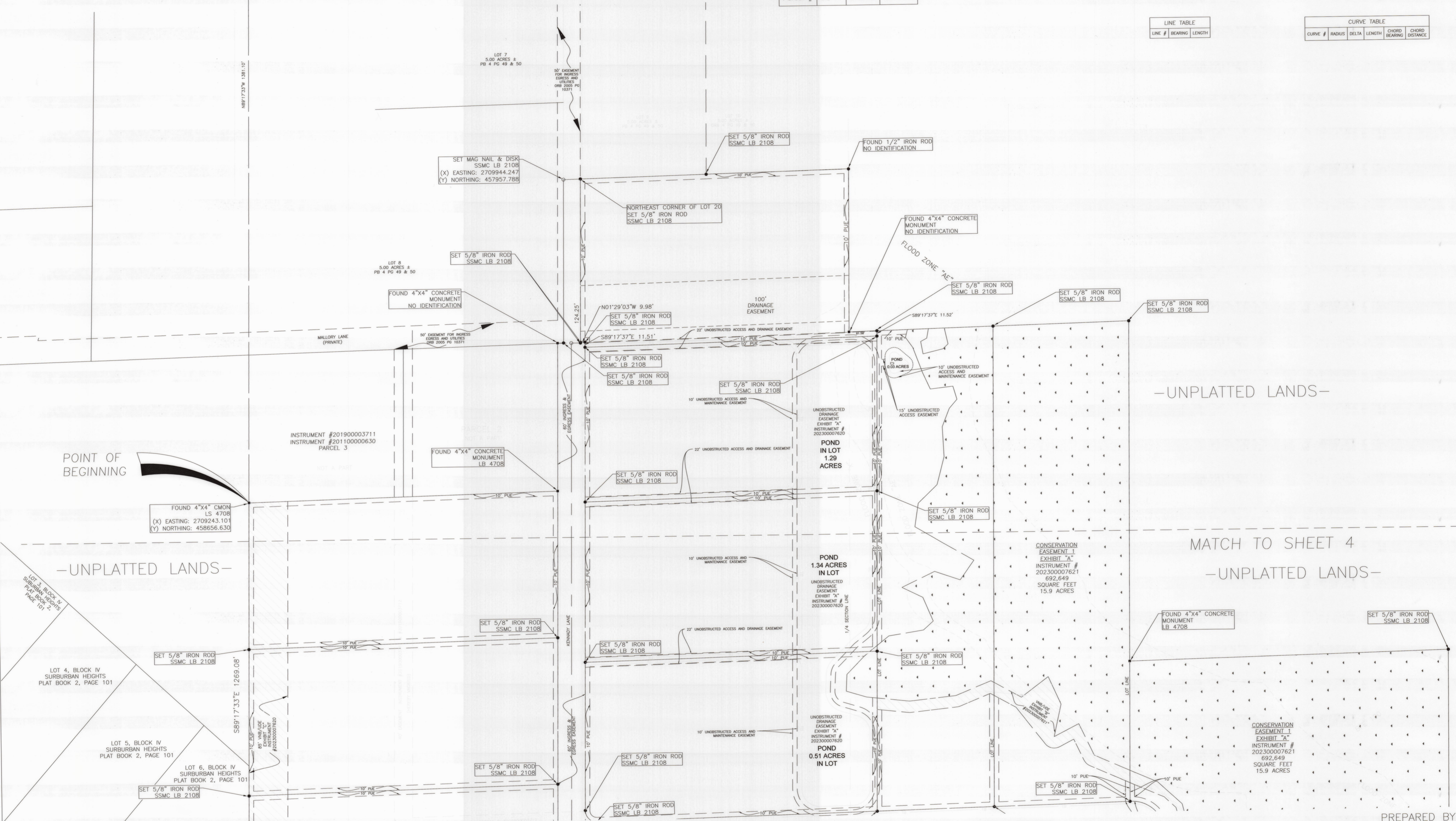
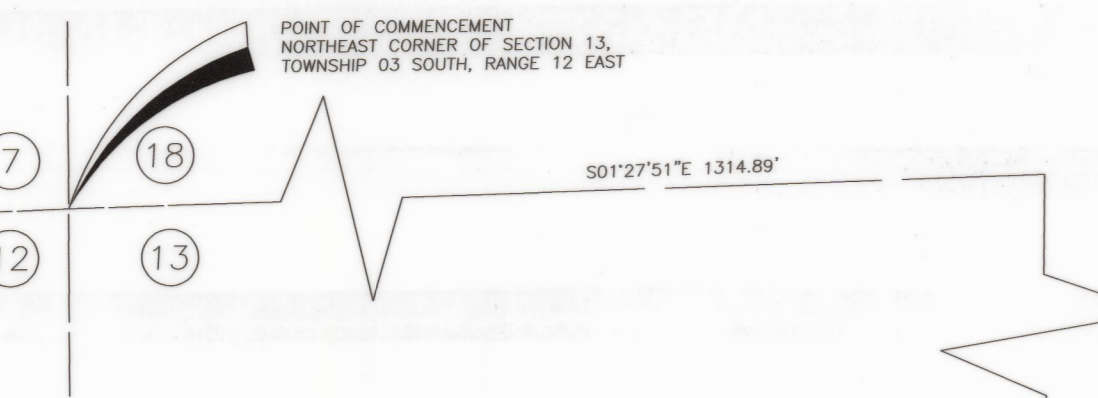
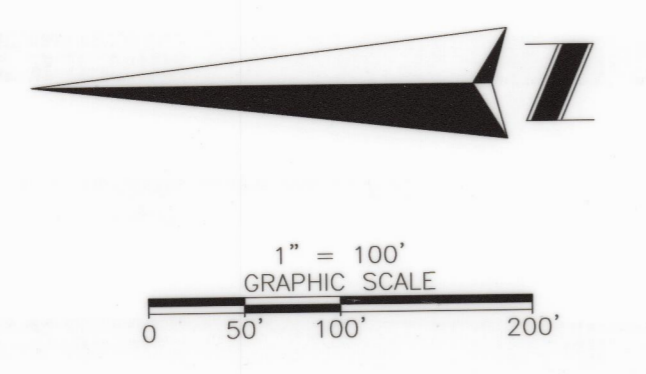
# Southern Estates Phase II

BEING A PORTION OF SECTION 13, TOWNSHIP 03 SOUTH, RANGE 21 EAST  
OF THE PUBLIC RECORDS OF BAKER COUNTY, FLORIDA

Parcel Table			
Parcel #	SQ FT	UPLAND	WETLAND

LINE TABLE		
LINE #	BEARING	LENGTH

CURVE TABLE					
CURVE #	RADIUS	DELTA	LENGTH	CHORD BEARING	CHORD DISTANCE



- LEGEND & ABBREVIATIONS:**
- = CONCRETE MONUMENT
  - = IRON PIPE
  - = IRON ROD
  - = MAG NAIL & DISK

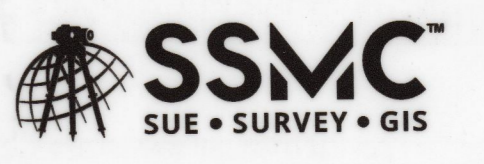
- ORB = OFFICIAL RECORDS BOOK
- PG(S) = PAGE(S)
- (P) = PLAT
- PSM = PROFESSIONAL SURVEY MANAGER
- PLS = PROFESSIONAL LAND SURVEYOR

- SSMC = SOUTHEASTERN SURVEYING AND MAPPING CORPORATION
- PB = PLAT BOOK
- PRM = PERMANENT REFERENCE MONUMENT
- PCP = PERMANENT CONTROL POINT
- LB = LICENSED BUSINESS

- VNB = VEGATIVE NATURAL BUFFER
- PUE = PUBLIC UTILITY EASEMENT
- PCP = PERMANENT CONTROL POINT
- LS = LICENSED SURVEYOR
- CMON = CONCRETE MONUMENT

- POB = POINT OF BEGINNING
- POC = POINT OF COMMENCEMENT
- TB- = TOP OF EMBANKMENT
- [Stippled Area] = WETLAND CONSERVATION AREA
- UDE = UNOBSTRUCTED DRAINAGE EASEMENT

**SOUTHEASTERN SURVEYING AND MAPPING CORPORATION**  
8641 Baypine Road, Suite 5  
Jacksonville, Florida 32256  
(904) 737-5990 Fax (904) 737-5995  
e-mail: info@southeasternsurveying.com  
Certification Number LB2108



PREPARED BY: